



Primacoustic  
1638 Kebet Way  
Port Coquitlam BC V3C 5W9  
Canada

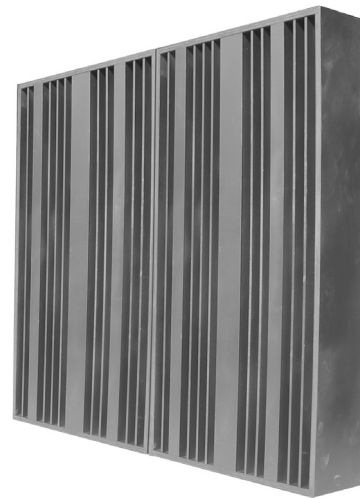
tel: 604-942-1001  
fax: 604-942-1010

email: [customerservice@primacoustic.com](mailto:customerservice@primacoustic.com)  
web site: [www.primacoustic.com](http://www.primacoustic.com)

Primacoustic is a division of JP CableTek Electronics Ltd.

www.primacoustic.com

PRIMACOUSTIC™  
STUDIO ACOUSTICS



**Razorblade™**

Quadratic Diffuser  
User Manual



Notes:

## Warranty information

The Primacoustic Razorblade diffuser is guaranteed to be free of manufacturing defects for a period of 30 days after purchase.

In the event that a manufacturing defect is uncovered, Razorblade is to be returned in the original box with send and return freight prepaid to the factory along with a copy of the original invoice. Primacoustic will at its discretion repair or replace the unit. Should the unit no longer be available, Primacoustic reserves the right to exchange this with a unit of similar performance and value.

This warranty shall solely extend to the original owner and is limited to manufacturing defects and excludes any damage due to wear and tear, abuse, misuse, improper mounting, misapplication, color fading, or deterioration due to prolonged exposure to UV or other environmental factors.

It is understood that the use and suitability of Razorblade is entirely the responsibility of the buyer or specifying engineer and as such, these agree to hold Primacoustic, or it's associated company, and/or officers, harmless from any responsibility whatsoever other than what is clearly outlined in this warranty.

Primacoustic  
1638 Kebet Way  
Port Coquitlam BC V3C 5W9  
Canada

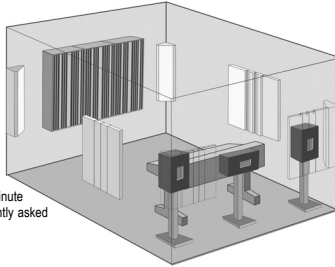
tel: 604-942-1001  
fax: 604-942-1010

email: [customerservice@primacoustic.com](mailto:customerservice@primacoustic.com)  
web site: [www.primacoustic.com](http://www.primacoustic.com)

Primacoustic is a division of JP CableTek Electronics Ltd.

## Placement

Typically, diffusers are placed on the rear wall or receiving end of the room and span 75% of the surface width. As a rule, one should at least span the width of the console or working area. Each **Razorblade** will in itself provide full bandwidth diffusion and is designed to follow a repeating pattern to whatever width is available. Visit [www.primacoustic.com](http://www.primacoustic.com) for up to the minute application notes and answers to frequently asked questions.



### Example: Typical Small Studio

Three **Razorblade**™ quadratic diffusers mounted side by side at the live end of the room will create a generous diffuse field that will add space to your mixing environment. Diffusion breaks up standing wave patterns without deadening the sound and increases definition from the source, improving the stereo image. Combine **Razorblade** diffusers with a Primacoustic engineered acoustical kit for best results.

## Specifications

### Dimensions:

**Height** - 48" (122cm)  
**Width** - 24" (61cm)  
**Depth** - 8" (20.3cm)

**Shipping package size:** 54" x 28" x 11"

### Material:

MDF - medium density fiberboard

### Net Weight:

60lbs (27.2kg)

### Color:

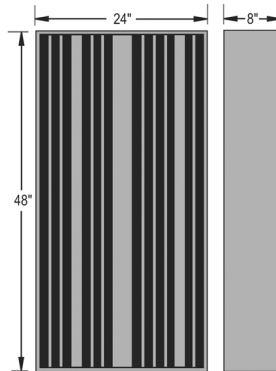
White

### Acoustical performance:

Effective from 400Hz to 10kHz

### Shipping weight:

63 lbs (29kg)



*Razorblade™  
Quadratic Diffuser*



# Razorblade™

## User Manual

Congratulations on the purchase of your **Razorblade** quadratic diffuser. **Razorblade** is designed to control reflected sound energy in a manner that will retain and enhance acoustical ambiance. **Razorblade** works by scattering sound energy and has been tested to be effective from about 400Hz to well over 10kHz where a fully diffuse field is created.

As a rule, **Razorblades** are usually placed in a cluster at the receive end of the room and span the width of the console or about 75% of the width of the back or receive wall. A large studio will typically employ between 5 or 8 units while a smaller project studio will typically employ between 3 to 4 units.

After installation, one immediately enjoys a greater sense of depth, a larger 'sweet-spot', improved imaging and less ear fatigue. The benefit is simple: the engineer is able to produce a better and more balanced mix, and the listener can enjoy a better stereo image with crisp detail.

When handled with reasonable care, **Razorblade** will provide years of trouble-free performance.

Please take a few minutes to read this manual. This will give you step by step instructions on how to mount and use the **Razorblade** diffuser in your room.

Should you have any questions or have comments, we invite you to send an email to: [customerservice@primacoustic.com](mailto:customerservice@primacoustic.com)

**NOTE: It is the user's responsibility for the safe installation and use of this product.**

Primacoustic  
1638 Kebet Way  
Port Coquitlam, BC V3C 5W9  
Canada

[www.primacoustic.com](http://www.primacoustic.com)

Primacoustic is a division of JP CableTek Electronics Ltd.  
Information and specifications are subject to change without notice.

## Installation

Installation is similar to the mounting of kitchen cabinets. Your local hardware or home renovation center may be able to give you some pointers on installing cabinets. Care must be taken to ensure your **Razorblades** are mounted straight and level. Walls are sometimes not perfectly straight so shims may be needed to achieve a flush fit against the wall.

### To mount the Razorblade diffuser you will need:

- **Tools** - tape measure, 8" long Phillips or square head (Robertson) screwdriver, electric drill and drill bits, magnetic screwdriver bit, construction level.
- **Fasteners** - 3" Phillips or square head (Robertson) wood screws, EZ-anchors or toggle bolts (4 - 6 per Razorblade) and appropriate sized washers, 1 1/4" wood screws.
- **Materials** - 3/4" x 2" hardwood or plywood bottom mounting rail (24" per Razorblade).

### 1. Mark bottom mounting rail position, locate studs and cut mounting rail to length:

- Accurately measure from floor and walls to place your **Razorblades** level in room at listening (seated) height. Draw a horizontal line above floor to mark desired diffuser bottom height. Check with a level.
- Locate the wall studs; draw vertical lines to mark the stud centers.
- Cut bottom mounting rail to the length required. Each **Razorblade** requires 24" of mounting rail; e.g. 3 Razorblades would require a 72" rail.

### 2. Mount bottom mounting rail, drill & mark diffuser anchor holes:

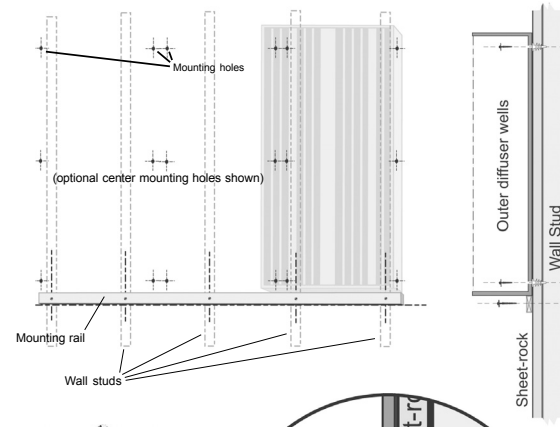
- Drill screw holes in the bottom mounting rail and affix it to the wall using wood screws long enough to go through the sheet-rock and into the wall studs.
- Drill mounting screw holes, using the appropriate sized drill bit, into the back of the two outside diffuser wells. Make the holes 2" to 3" from the top and bottom. Optionally you may put mounting holes in the middle of the well for extra security.
- Temporarily place the diffuser against the wall, resting it on the bottom mounting rail and mark the wall through the drilled holes in the back of the diffuser.
- Screw the EZ-anchors or drill toggle-bolt holes into the wall at the marked locations.
- Note: If the wall is not straight, it may be necessary to tape shims to the back of the **Razorblades** to achieve flush and straight seams between diffusers.

### 3. Screw back of outside diffuser wells:

- Locate each **Razorblade** against wall, resting its weight on the bottom mounting rail, and screw the EZ-anchor screws and washers (or toggle bolts and washers) through the drilled mounting holes to secure it.

**NOTE:** This installation represents a suggested method of **Razorblade** mounting only. The user is responsible for the safe, secure installation and use of this product.

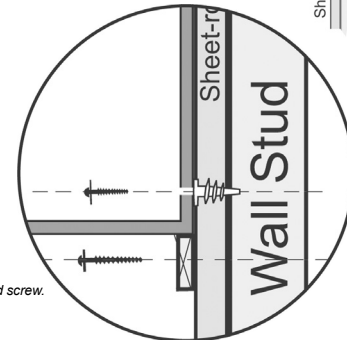
### Diffuser mounting example (for 3 diffusers)



*Recommended : EZ-Anchor and screw.*



*Don't use these types of sheet-rock anchors.*



*Detail of wall mounting showing EZ-anchor and mounting rail screws into sheet-rock and wall stud.*