



beyerdynamic

MMX 230 WIRELESS

ANC GAMING HEADSET

User Manual | Bedienungsanleitung | Mode d'emploi
Instrucciones de uso | Manuale d'uso | Manual de instruções
Gebruiksaanwijzing | Brugsvejledning | Käyttöohje
Bruksanvisning | Bruksanvisning | Návod k obsluze | Kasutusjuhend
Kezelési útmutató | Naudojimo instrukcija | Lietošanas pamācība
Instrukcja obsługi | Instrucțiuni de utilizare | Návod na používanie
取扱説明書 | 사용 설명서 | 使用说明书

EN DE FR ES IT PT NL DA FI NO SV

CS ET HU LT LV PL RO SK JA KO ZH



CONTENTS

SAFETY INSTRUCTIONS	3	USE WITH CABLE	7
Intended use	3	How to connect the USB cable	7
Adjusting the volume	3	OVERVIEW OF THE OPERATING FUNCTIONS	8
Reducing perception of ambient noise	3	OVERVIEW OF THE LED DISPLAYS	8
General maintenance instructions	3	CLEANING	8
Risk of swallowing	3	CHANGING EAR PADS	9
Power and connecting cable	3	BATTERY CHANGE	9
Using the battery	3	TROUBLESHOOTING	10
Environmental conditions	3	HELP WITH PROBLEMS / FAQ	10
ABOUT THIS MANUAL	4	PRODUCT REGISTRATION	10
BOX CONTENTS	4	DISPOSAL	10
OPERATING ELEMENTS	4	Battery disposal	10
CHARGING THE BATTERY	4	EU DECLARATION OF CONFORMITY	10
Remarks on the life of Li-ion batteries	4	TECHNICAL SPECIFICATIONS	10
Displaying the battery charge level	4	WARRANTY CONDITIONS	11
DOWNLOAD BEYERDYNAMIC APP	4	TRADEMARKS	11
COMPATIBILITY WITH PLAYBACK DEVICES	5		
SUPPORTED AUDIO CODECS	5		
OPERATION	5		
Connect to a device via dongle or Bluetooth®	5		
Bluetooth® pairing	5		
Dongle pairing	5		
Multi-point operation	5		
Setting up multi-point	5		
Using multi-point	5		
Delete pairing list	6		
Switching on/off	6		
Microphone on/off	6		
Playing media	6		
Adjusting the volume	7		
Telephone	7		
Sidetone on/off	7		
Reset to factory settings	7		

Thank you for purchasing the MMX 230 wireless ANC gaming headset from beyerdynamic. Please take some time to read this information carefully before using the MMX 230 wireless.

SAFETY INSTRUCTIONS

- ▶ Read these safety instructions carefully before using the MMX 230 wireless.
- ▶ Heed all instructions given, especially those regarding the safe use of the MMX 150 wireless.
- ▶ Do not use the MMX 230 wireless when it is damaged.

Intended use

- ▶ Only use the MMX 230 wireless as described in this manual.
- ▶ The company beyerdynamic GmbH & Co. KG accepts no liability for damage to the MMX 230 wireless or injury to persons caused by careless, improper or incorrect use of the MMX 230 wireless, or by use for purposes not specified by the manufacturer.
- ▶ The company beyerdynamic GmbH & Co. KG is not liable for damage to USB devices that do not comply with the USB specifications.
- ▶ The company beyerdynamic GmbH & Co. KG is not liable for damage resulting from connection interruptions due to batteries being empty or too old, or due to exceeding the Bluetooth® transmission range.
- ▶ Please also observe the relevant country-specific regulations before using the product.

Adjusting the volume



High volume levels over longer listening periods can permanently damage your hearing.

- ▶ Before using the MMX 230 wireless, set the volume to minimum.
- ▶ Only increase the volume after putting on the MMX 230 wireless.
- ▶ Do not use the MMX 230 wireless at high volume over a long period of time.
- ▶ When listening and speaking normally using MMX 230 wireless, your own voice should still be perceptible.
- ▶ In case of tinnitus, reduce the volume. If necessary, consult a doctor.
- ▶ We would like to point out that consistent high volume levels and longer listening periods can damage your hearing. Damage to hearing is irreversible. Always ensure an adequate volume level. It is advisable to keep listening periods as short as possible at high volume levels.

Reducing perception of ambient noise

The MMX 230 wireless headset drastically reduces the perception of ambient noise. Using the MMX 230 wireless in road traffic can be potentially dangerous. The user's hearing must not be impaired to the extent that it causes road safety risks.

- ▶ Do not use the MMX 230 wireless within the action area of potentially dangerous machines and tools.
- ▶ Avoid using the MMX 230 wireless in situations where hearing must not be impaired – particularly in road traffic, when crossing a level crossing or on a construction site.

General maintenance instructions

- ▶ Clean all parts of the MMX 230 wireless with a soft cloth moistened with water. Make sure that no liquid gets into the housing or the transducer.
- ▶ Do not use cleaning agents containing solvents, alcohol or acids, as these can damage the surface.

Risk of swallowing

- ▶ Keep small parts, such as product, packaging and accessories, away from children and pets. They constitute a choking hazard if swallowed!

Power and connecting cable

- ▶ Only use the cable supplied by us for both charging and connecting to a laptop.

Using the battery

Danger from heat, water and mechanical stress

Excessive heat, water and mechanical stress, may cause explosion, heat, fire, smoke or fumes. Injuries and irreversible damage to the battery may result.

- ▶ Do not expose the battery to excessive heat, fires or extremely low air pressure. There is a risk of explosion, fire, smoke or gas.
- ▶ Do not subject the battery to mechanical stress such as crushing. This may lead to an irreversible damage to the battery, explosion or injuries.
- ▶ Only use a USB 2.0/3.0 standard-compliant 5 V power adapter to charge the battery via the integrated USB type C socket.

Environmental conditions

- ▶ Do not expose the MMX 230 wireless to rain, snow, liquids or moisture.

ABOUT THIS MANUAL

These instructions describe the most important functions of the product.

The information in these instructions refers to the standard settings of the software. A newer version may be available.

- ▶ Information on the software update can be found in the “beyerdynamic App” chapter.

BOX CONTENTS

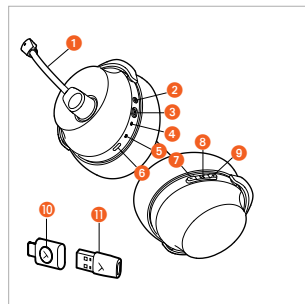
- ▶ MMX 230 wireless headset
- ▶ USB-C cable, 1.8 m
- ▶ Dongle
- ▶ Adapter USB-C to USB-A
- ▶ Soft bag
- ▶ Quick start guide
- ▶ Compliance booklet



OPERATING ELEMENTS

MMX 230 wireless headset

- 1 Microphone (fixed)
- 2 On/off button
- 3 ANC button
- 4 Status LED
- 5 Charging LED
- 6 USB-C connection
- 7 Volume -
- 8 Multifunction button
- 9 Volume +



MMX 230 wireless

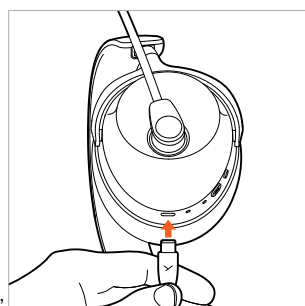
Low Latency Dongle

- 10 Function button (Dongle)
- 11 Adapter USB-C to USB-A

CHARGING THE BATTERY

Before using the MMX 230 wireless for the first time, we recommend that you fully charge the battery in the headset. Please only use the USB cable supplied for charging.

- ▶ Connect the USB charging cable to the USB-C connection of the MMX 230 wireless and the USB-A connector to your device (e.g. USB power supply, computer etc.).
- ▶ The charging LED displays the charging status. When the battery is fully charged, the LED illuminates green.



Remarks on the life of Li-ion batteries

- ▶ When fully charged, disconnect the USB cable from the charger and the product.
- ▶ **CAUTION!** High temperatures, especially with a high charge level, can cause irreversible damage.
- ▶ If the battery is not used or is stored for extended periods of time, it is recommended to charge it to approx. 50% and store it at no more than 20 °C.
- ▶ Switch off the MMX 230 wireless after use.

Displaying the battery charge level

The charge level of the MMX 230 wireless is displayed by the charging LED.

Charge level	Display charging LED
0 to 30 %	Flashes red
31 to 70 %	Flashes yellow
71 to 99 %	Flashes green
100 % (battery fully charged)	Illuminates green

DOWNLOAD BEYERDYNAMIC APP

The beyerdynamic app gives you a customised control of your MMX 230 wireless.

Before using your MMX 230 wireless for the first time:

- ▶ Download the beyerdynamic app from the App Store (for iOS devices) or Google Play (for Android devices).



Search for "beyerdynamic" in the app store.



- ▶ With the beyerdynamic app you can carry out customised operation settings and software updates.
- ▶ These settings are saved to your MMX 230 wireless, so you can enjoy them with any playback device connected to your MMX 230 wireless.

COMPATIBILITY WITH PLAYBACK DEVICES

MMX 230 wireless is compatible with Bluetooth® devices that support the following profiles:

- A2DP (for audio transmission)
- HFP/HSP (for phone operation and voice assistant)
- USB dongle
- USB cable to the headset
- Analogue cable

SUPPORTED AUDIO CODECS

Within the A2DP profile, MMX 230 wireless supports the audio codecs AAC, SBC and LC3.

Only codecs that are available in the playback device can be used for audio transmission. The playback device and MMX 230 wireless automatically agree on the best available codec.

Most playback devices do not indicate which codec is actively in use.

OPERATION

Connect to a device via dongle or Bluetooth®

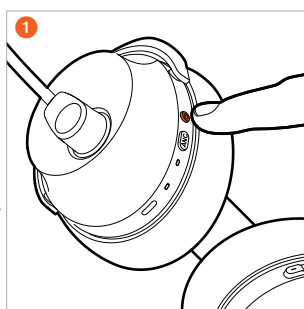
The MMX 230 wireless is paired with the dongle when delivered. To activate the dongle connection, simply connect the dongle to a compatible device and switch on the headset.

If you wish to pair with a Bluetooth device or if you need to pair with the dongle again, please follow these steps:

- ▶ Please refer to the operating instructions for the device you wish to connect to the MMX 230 wireless.

Bluetooth® pairing

- 1 When the MMX 230 wireless is **switched off**, press the on/off button approx. 4 seconds (—) until the status LED alternately flashes blue and red.



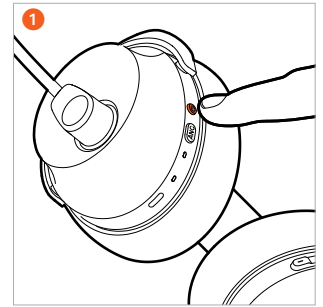
When the MMX 230 wireless is **switched on**, briefly press the on/off button twice (●●) to enter the pairing mode. The status LED alternately flashes blue and red.

- 2 Select “MMX 230 wireless” from the pairing list of the playback device. As soon as a Bluetooth® connection is established, the status LED of the headset flashes blue.

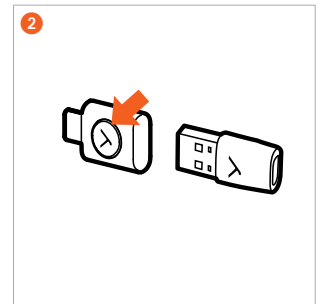


Dongle pairing

- 1 Connect the dongle via USB-C or the USB-A adapter to a device (e.g. computer). When the MMX 230 wireless is **switched off**, press the on/off button for approx. 4 seconds (—) until the status LED flashes alternately blue and red.



- 2 Press the function button on the dongle until it will flash rapidly blue. Wait until you hear the voice prompt on your headset.



Multi-point operation

MMX 230 wireless can be paired with up to eight devices via Bluetooth®. An active connection is possible with a maximum of two devices at the same time. Music playback and phone operation is only possible with one device at a time. Phone operation has priority over music playback, i.e. music playback is interrupted when a call is received.

Setting up multi-point

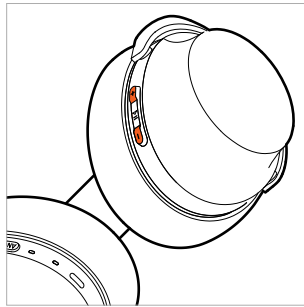
- ▶ Connect the MMX 230 wireless to the first device (refer to “Bluetooth® Pairing”).
- ▶ If the MMX 230 wireless is **switched on**, briefly press the on/off button twice (●●) to access the pairing mode. The status LED flashes alternately blue and red.
- ▶ If the MMX 230 wireless is **switched off**, press the on/off button approx. 4 seconds (—) until the status LED alternately flashes blue and red.
- ▶ Connect the MMX 230 wireless to the second device (refer to “Bluetooth® pairing”).
- ▶ When both devices are paired with the MMX 230 wireless, the MMX 230 wireless automatically connects to both devices each time it is switched on.

Using multi-point

Media playback active / accept call	Briefly tap the multi-function button once (●)
Hang up / start media playback again	Briefly tap the multi-function button once (●)

Delete pairing list

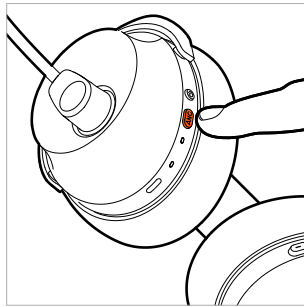
- ▶ Press and hold the plus (+) and minus (-) button of the **switched on** MMX 230 wireless for 6 seconds () until the status LED alternately flashes red and blue.



Switch between noise cancellation (ANC) and transparency mode

You can use the ANC button to switch between active noise cancellation (ANC), transparency mode and OFF mode. The MMX 230 wireless is supplied in OFF mode.

- ▶ Simply press the ANC button to activate the ANC mode, transparency mode or ANC OFF mode in sequence.

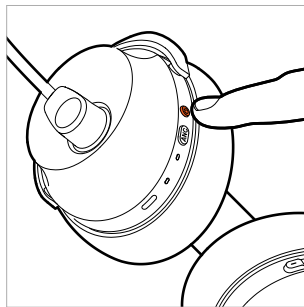


You can make settings for noise cancellation (ANC) and transparency mode via the beyerdynamic app.

Switching on/off

▶ Switching on

Press and hold the on/off button of the **switched off** MMX 230 wireless for approx. 2 seconds () until you can hear the voice prompt. The status LED is steady red for 2 seconds. The battery percentage is announced.



▶ Switching off

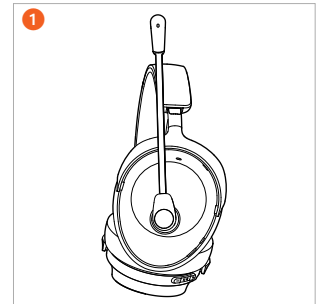
Press and hold the on/off button of the **switched on** MMX 230 wireless for approx. 4 seconds () until you can hear the voice prompt.

Microphone on/off

The microphone can only be muted/activated when MMX 230 wireless is switched on.

1 Mute the microphone

Turn the microphone boom upwards.



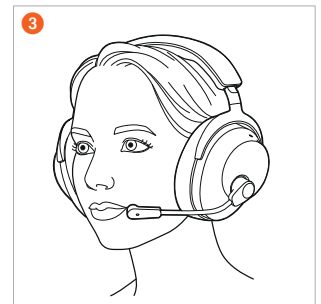
2 Unmute

Turn the microphone boom downwards to the height of your mouth. The microphone is active and works normally.



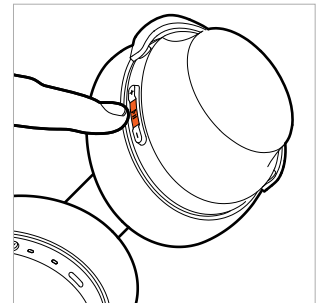
3 Position the microphone

For optimum intelligibility of speech, make sure that the microphone capsule of the MMX 230 wireless is positioned parallel to the left corner of the mouth at a slight distance.



Playing media

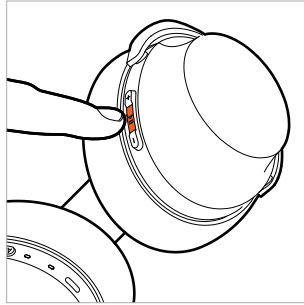
- ▶ Press the multifunction button once () to start or stop playback.
- ▶ Press the multifunction button twice () to play the next track.
- ▶ Press the multifunction button three times () to play the previous track.



If you use the MMX 230 wireless with cable, you must switch it on as well.

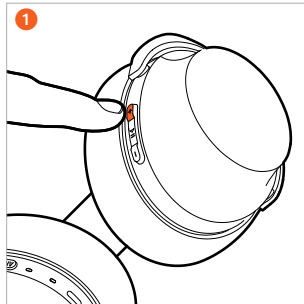
Switch on the voice assistant

- ▶ Press and hold the multi-function button for 2 seconds (■) to activate the personal assistant installed on the smartphone or tablet.

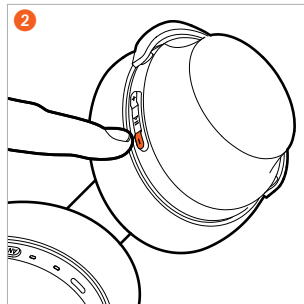


Adjusting the volume

- 1 Press the **plus button (+)** to **increase** the volume. When pressing once (●), the volume is increased by one step. Press and hold the plus button (+) to increase the volume gradually.

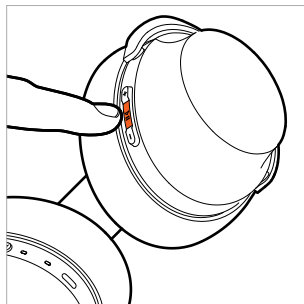


- 2 Press the **minus button (-)** to **decrease** the volume. When pressing once (●), the volume is decreased by one step. Press and hold the minus button (-) to decrease the volume gradually.



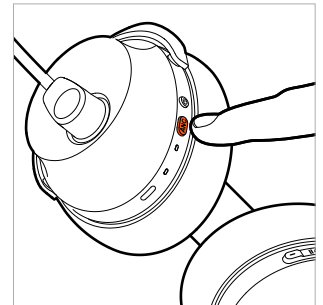
Telephone

- ▶ Press the multifunction button once (●) to accept the call or end the active call.
- ▶ Press the multifunction button for approx. 2 seconds (■) to reject the incoming call.
- ▶ If another call comes in during an active call, press the multifunction button once (●) to accept the incoming call and end the active call.



Sidetone on/off

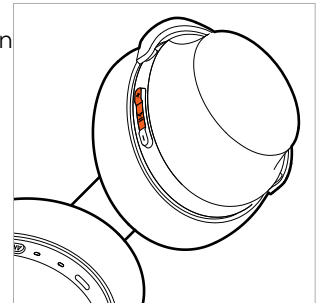
- ▶ **Switching on**
Press and hold the ANC button for approx. 2 seconds (■).
- ▶ **Switching off**
Press and hold the ANC button for approx. 2 seconds (■).



Sidetone does not work when using the audio cable.

Reset to factory settings

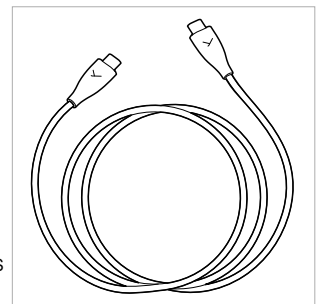
- ▶ Press and hold the plus button (+) and multifunction button for approx. 6 seconds (■) until the status LED is flashing purple.



USE WITH CABLE

How to connect the USB cable

- ▶ Connect the USB-C to USB-C cable to the headset (USB-C) and the other end (USB-C) to a device (e.g. computer/console).
- ▶ For devices with USB-A ports, use the USB-C to USB-A adapter.
- ▶ Please check your system's audio settings and select MMX 230 wireless as the input and output device if it is not already selected.
- ▶ If you wish to charge the headset during wireless operation, connect it to the PC. This will not affect the wireless connection.



OVERVIEW OF THE OPERATING FUNCTIONS

If not stated otherwise, the functions listed apply to a switched-on headset.

Function	Operation headset
Switch on	▶ Press and hold the on/off button approx. 2 seconds (■).
Switch off	▶ Press and hold the on/off button approx. 4 seconds (■).
Pairing mode	▶ Press and hold the on/off button of the switched off headset for approx. 4 seconds (■). ▶ Briefly press the on/off button of the switched on headset twice (●●).
Reset to factory settings	▶ Press and hold the plus button (+) and multifunction button for approx. 6 seconds (■).
Start / pause	▶ Press the multifunction button once (●).
Increase volume	▶ Press the plus button (+).
Decrease volume	▶ Press the minus button (-).
Next track	▶ Press the multifunction button twice (●●).
Previous track	▶ Press the multifunction button three times (●●●).
Accept / end call	▶ Press the multifunction button once (●).
Reject call	▶ Press and hold the multifunction button for approx. 2 seconds (■).
Accept an incoming call during an active call and end the active call	▶ Press the multifunction button once (●).
Sidetone on/off	▶ Press and hold the ANC button for approx. 2 seconds (■).

OVERVIEW OF THE LED DISPLAYS

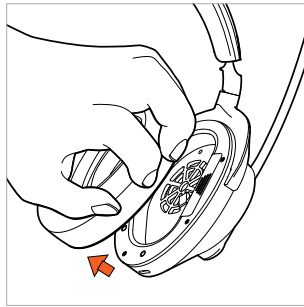
Function	LED display
Switch on	LED illuminates red for 2 s
Switch off	LED illuminates red for 2 s
Pairing mode	LED flashes alternately red and blue
Bluetooth® connection active	LED slowly flashes blue
Bluetooth® connection lost	LED rapidly flashes blue
Restore factory settings	LED flashes purple three times
Connected to dongle	LED slowly flashes blue
Low battery warning	LED rapidly flashes red three times
Charging	
0 - 30%	LED flashes red
31 - 70%	LED flashes yellow
71 - 99%	LED flashes green
100%	Illuminates green

CLEANING

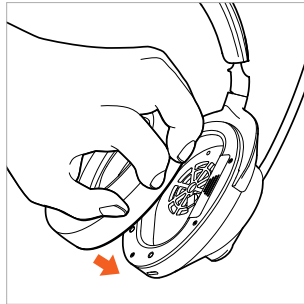
- ▶ For reasons of hygiene, you should occasionally clean the ear and headband pads with a soft cloth moistened with water. Make sure that **no water** gets into the ear cups or transducers.
- ▶ Do **not** use cleaning agents containing solvents, alcohol or acids.
- ▶ **Never** use a **vacuum cleaner** for cleaning the headphone, as this may cause irreparable damage.
- ▶ As ear pads are subject to natural wear and tear, it will be necessary to replace them from time to time. You can easily do this yourself.
- ▶ If other components have to be replaced, please contact your local beyerdynamic representative.

CHANGING EAR PADS

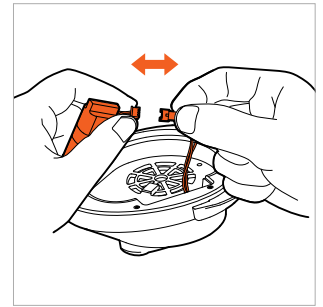
- ▶ The ear pads are attached to the ear cup by magnets. Simply remove the ear pad.



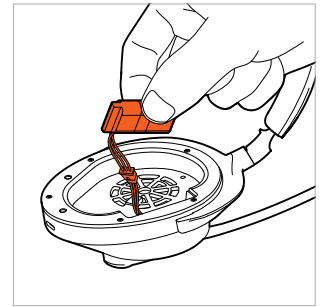
- ▶ Place the new ear pad onto the ear cup.



- ▶ Disconnect the plug connection. Only pull on the plugs, not on the cables.



- ▶ Connect the new battery (the plug has a reverse polarity protection).

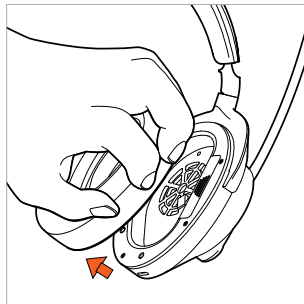


- ▶ Place the battery into the battery compartment as illustrated.

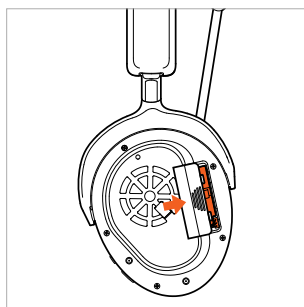


BATTERY CHANGE

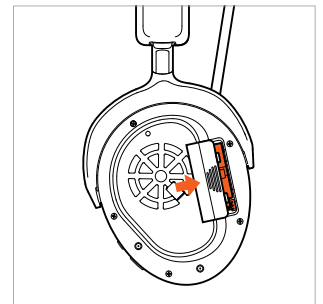
- ▶ Remove the ear pad of the **left** ear cup.



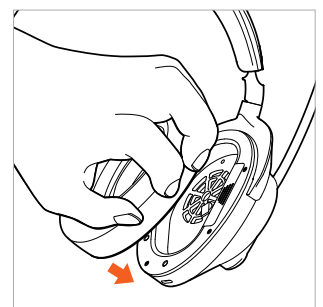
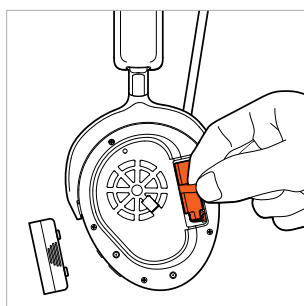
- ▶ Open the battery compartment and pull the battery carefully out of the compartment using the strap.



- ▶ Close the battery compartment.



- ▶ Put the ear pad onto the ear cup again.



TROUBLESHOOTING

Problem	Cause	Solution
MMX 230 wireless cannot be switched on	▶ Battery is empty or almost empty.	▶ Charge the battery.
No audio output	▶ No Bluetooth® connection	▶ Pair MMX 230 wireless with the playback device.
MMX 230 wireless does not appear among the available Bluetooth® devices on the playback device	<ul style="list-style-type: none"> ▶ MMX 230 wireless is turned off. ▶ MMX 230 wireless is not in pairing mode. ▶ There exists a Bluetooth® connection to another playback device already. 	<ul style="list-style-type: none"> ▶ Turn on MMX 230 wireless. ▶ Put MMX 230 wireless into the pairing mode. ▶ Disconnect the Bluetooth® connection to the other playback device and connect MMX 230 wireless to the desired device.
Playback volume is too low, although the volume of MMX 230 wireless is set to maximum	▶ The received audio signal is too low.	▶ Increase the playback volume on the playback device to maximum.
The wireless range is too low or the connection is disrupted	▶ There are interferences with other devices.	<ul style="list-style-type: none"> ▶ Move away from WLAN routers and microwave ovens. ▶ Make sure that your body is not between the playback device and MMX 230 wireless. ▶ Use a different codec on the playback device.

HELP WITH PROBLEMS / FAQ

Answers to more most common problems and questions can be found on the internet at:
<https://www.beyerdynamic.com/faq>

PRODUCT REGISTRATION

Using the serial number, you can register your MMX 230 wireless on the internet at:
<https://www.beyerdynamic.com/service>

DISPOSAL

- ▶ This symbol on the product, in the operating instructions or on the packaging means that electrical and electronic devices must be disposed of separately from household waste at the end of their life cycle.
- ▶ Always dispose of used equipment in accordance with applicable regulations.



For sale within the EU only:

- ▶ For the return of old equipment, there are free collection points or a free return to beyerdynamic, as well as other acceptance points for reuse. The addresses are available at the local city or municipal administration.
- ▶ Dealers for electronic equipment are generally obliged to take back waste electrical/electronic equipment free of charge. This obligation also applies to sales via remote communications.

Battery disposal

- ▶ Dispose of batteries separately from the product after use in accordance with the applicable regulations. They must not be disposed of with household waste. Returning batteries is free of charge.
- ▶ Discharge the batteries before disposal.

EU DECLARATION OF CONFORMITY

The company beyerdynamic GmbH & Co. KG hereby declares that this radio transmission device complies with the EU Directive 2014/53/EU and the EU Directive 2011/65/EU.

- ▶ You will find the full text of the EU declaration of conformity on the internet at:
<https://www.beyerdynamic.com/cod>

TECHNICAL SPECIFICATIONS

MMX 230 wireless headset

Bluetooth® frequency range	2,400 – 2,483.5 MHz
Transmitting power	max. 10 dBm
Charging temperature range	0 to +45 °C
Operating temperature range	-10 to +50 °C
Battery type: Lithium-ion rechargeable battery	3.7 Vdc, 850 mAh

MMX 230 wireless Low Latency Dongle

Bluetooth® frequency range	2,400 – 2,483.5 MHz
Transmitting power	max. 10 dBm
Operating temperature range	-10 to +50 °C

- ▶ More detailed information on the technical specifications can be found on the internet at:
<https://www.beyerdynamic.com>

WARRANTY CONDITIONS

The company beyerdynamic GmbH & Co. KG provides a limited warranty for the original beyerdynamic product you have purchased.

- ▶ You can find detailed information about beyerdynamic's warranty conditions on the internet at:
<https://www.beyerdynamic.com/service/warranty>

TRADEMARKS

The Bluetooth® word mark and logos are registered trademarks of the Bluetooth® SIG, Inc. and any use of such marks by beyerdynamic is under license. Other trademarks and trade names are the property of the respective owners.

USB Type-A, USB Type-B und USB Type-C are trademarks of USB Implementers.

beyerdynamic GmbH & Co. KG
Theresienstraße 8 · 74072 Heilbronn / Germany
Phone +49 7131 617-300 · E-Mail info@beyerdynamic.com
www.beyerdynamic.com

For further distributors worldwide, please go to www.beyerdynamic.com
Non-contractual illustrations. Subject to change without notice.

Weitere Vertriebspartner weltweit finden Sie im Internet unter www.beyerdynamic.com
Abbildungen nicht vertragsbindend. Änderungen vorbehalten.