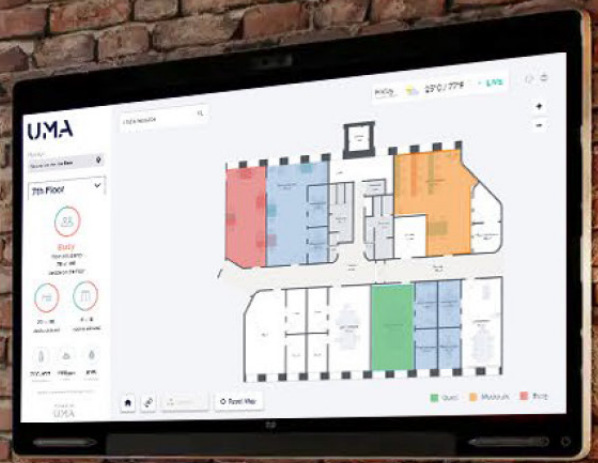


Using **UMA Vision** to Drive Your **Workspace Efficiencies**

OR, WHEN ROOM BOOKING JUST ISN'T ENOUGH FOR YOUR ORGANISATIONAL NEEDS



AI and IoT Sensors Deliver Real-Time Insights That Drive Digital Transformations To Emphasise Where Efficiencies and Sustainability Targets Can Be Achieved

ask
UMA
POLAR

IN AN INCREASINGLY AI DRIVEN WORLD, DATA CAN ENABLE GREAT THINGS TO HAPPEN

Whether it's tracking prices on comparison websites, monitoring financial transactions, or major sports teams tracking transfer targets, when used correctly data is a force for informed decisions that lead to better outcomes. These are not assumptions, these are data-proven results set against the outcomes achieved previously.

For any conclusions to be reached, the new data set must have an older data set to compare itself to. An existing data set then allows meaningful goal setting to be determined, and the subsequent data set gives transparency to the effectiveness of the actions implemented to achieve those goals.

Whether your immediate goal is to re-purpose buildings to support a return to the office or implement changes to reach Net Zero as part of ESG targets, having effective data is the only way to know for sure that your aspirations are being achieved.

The desire for increasing the operational efficiency of our workspaces is driven by several key requirements:

- Every business has Environmental, Social and Governance (ESG) strategies to achieve, often referred to as 'sustainability' or 'Net Zero' targets.
- Working practices have changed and will evolve further in terms of location(s), neurodiversity, and real estate rightsizing.
- The efficiencies and possibilities that technology offer us have been revolutionised, and AI will accelerate this further.
- AI provides futureproofing by keeping our finger on the pulse of these ever-changing requirements, enabling us to adapt to them — sometimes without even knowing it — rather than playing catch-up after the event.
- The employee experience: Cultivate a workspace that enables your team to excel in their strengths. Prioritise employee experience by employing a user-friendly platform crafted for seamless workplace interactions.

UNDERSTAND THE PERFORMANCE OF YOUR BUILDINGS

New buildings benefit from sustainable construction standards based on proven data, as well as optimising interior designs and timetabling to encourage greater student utilisation rates.

For existing buildings, the picture isn't so clear. Accurate and comprehensive emissions and occupancy measurements are essential, because if you haven't got the data to understand how efficiently your buildings are performing now, how can you possibly know if future actions are delivering improvements? And let alone know if those improvements are radical enough to achieve your Net Zero ambitions?

MAXIMISE YOUR OCCUPANCY LEVELS

Meeting room booking data will only provide you with the planned usage of bookable rooms and spaces. With UMA Vision's monitoring and AI-predictive software, you will be able to understand how your buildings are performing in real time today, giving you the data necessary to increase occupancy and utilisation levels. This will help you understand what's working and where additional measures are required.

ACHIEVE NET ZERO AND SUSTAINABILITY TARGETS

Energy used to construct and power residential and commercial buildings is greater than that required for industry and transportation. Having data on utilisation rates and energy consumption will allow strategic decisions for achieving Net Zero, a key element of ESG targets, to be formulated and implemented based on facts, not assumptions.



How can UMA Vision help YOUR business?

UMA Vision is a single fully integrated AV and smart building management system that provides the tools you need to make your workspaces perform at their best.

It incorporates elements into a single solution that previously may have required two or more different platforms to achieve, enabling you to have the live and historical data combined within a single dashboard to demonstrate your actual use compared to your intended use, and giving you the power of predictive forecasting.

These are the insights — the data metrics — that you must have in order to make the changes necessary to achieve against your requirements, and the evidence that your requirements are being met.

The data you need comes from your actual space usage, which can be very different from what was intended originally, and co-exists with data on energy consumption along with the indoor air quality. Simple IoT sensors provide real-time measurements of heat, humidity and CO2 levels which, when optimal, positively affect levels of concentration and well-being.

Will I be locked into a 100% proprietary system?

Not at all. UMA Vision is very AV & IT friendly and ISO27001:2022 Certified. Being open platform, UMA Vision already works with the leading enterprise AV and IT vendors for integrations with many existing room booking panels, IoT Sensors, Video platforms and much more. UMA Vision is a certified Cisco Partner, with integrations to Webex Control Hub utilising the built-in sensors on Webex devices whether being run in native Webex or MS Teams modes. Additionally, UMA Vision is a Meraki Partner integrating with sensor hardware to report critical ESG metrics and improve resource use.

Can't we just upgrade the room booking system we have?

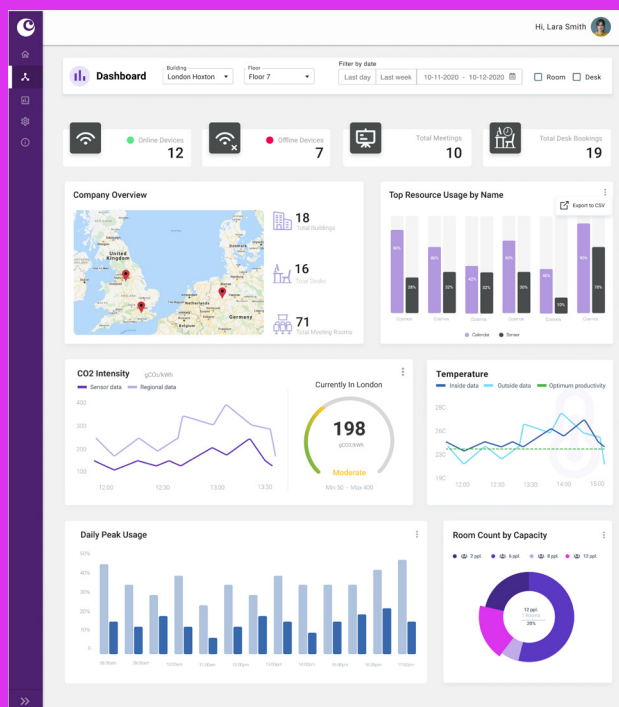
Covid19 has been the catalyst for wholesale changes to our physical office spaces, along with shifting our attitudes to where and when we work to maximise our outcomes. We now use video to work in places that are very different to just a few years ago, and many room systems only report their intended use and are ►

for the benefits they will quickly deliver.

In short, our needs and expectations have changed so much that just upgrading what we already have doesn't make financial or operational sense.

Where else can UMA Vision help us achieve our workspace efficiencies?

- UMA Vision can book any space and capture the resulting data. Meeting rooms, desks, and spaces.
- Fully automate your facilities. Catering, EV charging, car parking and more.
- Visitor management. Pre-arrival confirmations, check-ins, digital signage and wayfinding.
- Smart office automation to address ESG commitments.
- Live and historical data analytics for predictive forecasting to make informed decisions on improving workspace efficiencies.



Example of the UMA Dashboard

not interoperable with the environmental data that is essential for understanding the full picture.

This is the time for AI to provide you with insights derived from historical and real-time data analysis, in conjunction with the real-time environmental properties in your meeting rooms and spaces, enabling you to get ahead and shape future requirements before they manifest themselves as problems needing to be solved.

Now is the time for UMA Vision's AI Platform to help you proactively meet the complex challenges of today's and tomorrow's workspace management requirements, instead of waiting to react after problems have caused widespread dissatisfaction, as the resulting unintended damage to workplace culture can be toxic.

AI is accelerating the pace of digital change. No longer will upgrading what we already have be either the default position, or a sensible option. Increasingly our interests will be best served by discontinuing the current way and to start over again, with AI the gamechanger that will enable these wholesale changes

This is the time for a wholesale rethink of Workspace Management Strategies, when the AV side of room booking systems must truly merge with the IT and control of building management systems, because in the real world they cannot operate in isolation of each other.

That sounds like a steep learning curve?

Not at all. Firstly, UMA Vision gathers all the data you generate together in a single dashboard so you can determine your strategy and actions based on the facts. Secondly, you can proceed at your own pace, starting with just a single module and, when appropriate, adding additional modules.

Use — and only pay for — the functionality you need now, when you're ready simply add additional UMA Vision resources to bring enhanced capability into the mix. ■



Here's the Bigger Picture

WHERE ROOM BOOKING IS JUST THE START OF IT

Room Booking

A vendor-agnostic display outside the room with meeting room bookings and other information is only the start of it. Integrate Office 365 or Google Workspace calendars for real-time information, all of which, including the UMA Vision dashboard with 2D and 3D floorplans, are available from any mobile device, allowing you to select the right room for you.

If the office environment is unfamiliar to you, perhaps because you're visiting a different office location, you can navigate from within the app. Additionally, for complex office layouts, floor kiosks can be used for navigation, supported by floor maps, live occupancy and availability data, so immediate ad-hoc room bookings can also be made.

People Count

Using already present CCTV and Video Conference cameras, UMA Vision offers a comprehensive people-counting solution that helps organisations to manage occupancy levels in real time. Monitoring occupancy levels in real time allows for informed decisions about managing your workspace. With historical occupancy data, you can analyse trends and make data-informed decisions regarding future workspace requirements.

Meeting rooms and spaces that are under or over-utilised can be quickly identified and changes to improve efficiency and productivity introduced.

In the event of a future pandemic or another incident that restricts gatherings of colleagues, UMA Vision's real-time people counting module can ensure compliance with temporary or permanent safety regulations designed to keep people safe.

Activity Based Working

Increasingly, workspaces are being determined for the outcomes that are required, with different tasks prompting a variety of designs; collaboration spaces, open-plan desks and private offices. Creating zones for these spaces allows employees to choose a zone that best suits their needs, providing a solution for grouping colleagues who work together on projects.

UMA Vision supports a wide range of customisation, allowing you to add employees to logical groups and, if necessary, to restrict bookings to specific areas. Overall, UMA Vision is the perfect solution for implementing and supporting activity-based working, going beyond the standard Active Directory sync and empowering truly collaborative working groups in designated zones. ►



People-Counting Solution with IoT Sensors in Meeting Rooms

Air Quality Monitoring

Employee wellbeing, which affects their productivity, is directly affected by the environmental conditions in the workplace. The effect on humans of rooms that are too hot or too cold is well understood, as well as impacting on energy consumption, but more recently we've become aware of the detriment to learning in education when CO₂ levels are too high, and students lose concentration. Productivity levels within our corporate offices is similarly affected, as well as there being a long-term risk to health.

UMA Vision collects the Indoor Air Quality data from IoT sensors, either specially provided or those already integrated in meeting room technology, such as large format displays and soundbars. This real-time data allows organisations to automate real-time corrections, creating a healthier workspace that improves overall productivity and engagement.

Poor working conditions not only lead to absenteeism but creates a cost burden to individual businesses and the UK economy. A report by Vitality in 2020 calculated this cost at £92bn to the UK economy.

Energy Monitoring

Complementing UMA Vision's core functionality for creating a compelling workspace experience for employees, is a suite of energy monitoring features. These insights, showing actual real-time energy usage, provide the basis for data-driven decisions around energy reduction, with positive consequences for energy bills and lowering carbon consumption.

Whatever your ESG, Net Zero or Sustainability targets, data-informed decisions must be at the basis of positive actions to reduce the environmental impacts of incorrect workspace usage. ►



Resource Scheduling

UMA Vision features a resource scheduling module to control and automate a wide range of resource variables that improve the employee experience and create efficiencies.

Whether its catering, car parking, EV charging, conference seat reservations, or more, the UMA Vision dashboard allows you to manage and visualise your resources and their availability in real time. Available resources can be booked using any mobile device with just a few simple clicks.

Placing control of resources, with individual permissions where appropriate, in the hands of those that need them, saves time and energy, introduces certainty, and adds to the feeling of being valued and belonging.

Visitor Management

The UMA Vision platform allows you to set up a simple and easy-to-use check-in and check-out process for visitors, which helps you to stay on top of who is on the premises, adhering to health and safety requirements.

Your employees can effortlessly create visitor invites that initiate visitor badges, schedules their visit and, where necessary, ensures them access at a given date and time. Using Resource Scheduling, you can manage any car park and catering needs for visitors, creating a seamless experience that speaks volumes to your organisation's professionalism.

Analytics and Reporting

Core to the UMA Vision platform is a robust reporting and business analytics tool that each and every UMA Vision module you have feeds into. Now you can understand precisely how your workspaces are used and, where necessary, you have the metrics to inform positive change.

Historical data, for example, can compare booking data with intended use, with the actual occupancy based on the real-time people counting at the time. UMA has developed, and will continue to develop further, robust AI algorithms that use historical data to make proactive recommendations on potential workspace optimisations. ▶

Ground Floor • LIVE

2.5 kWh

consumed in the last hour

People in Space

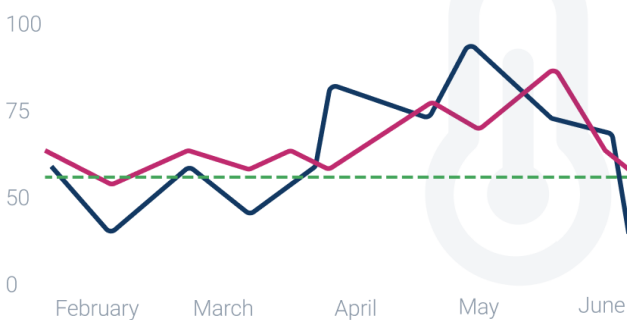
Capacity

143

250

Sustainability Score

● Your score ● Average score ● Optimum score



Halifax

• LIVE >



ADDRESS
Dean Clough, Halifax
United Kingdom

BUILDING CAPACITY
2000
seats

LIVE UTILISATION

70% / 1210 people

Rooms	Desks	Parking	Other
12 of 86	1132 of 1500	657 of 1000	0 of 0

ENERGY USAGE 1250KW/PER HOUR

AREA 2,678 m2

ENERGY USAGE per m2 0.47KW/PER HOUR

Design Team

Excellent

31dBa

Sound Level

People in Space

Capacity

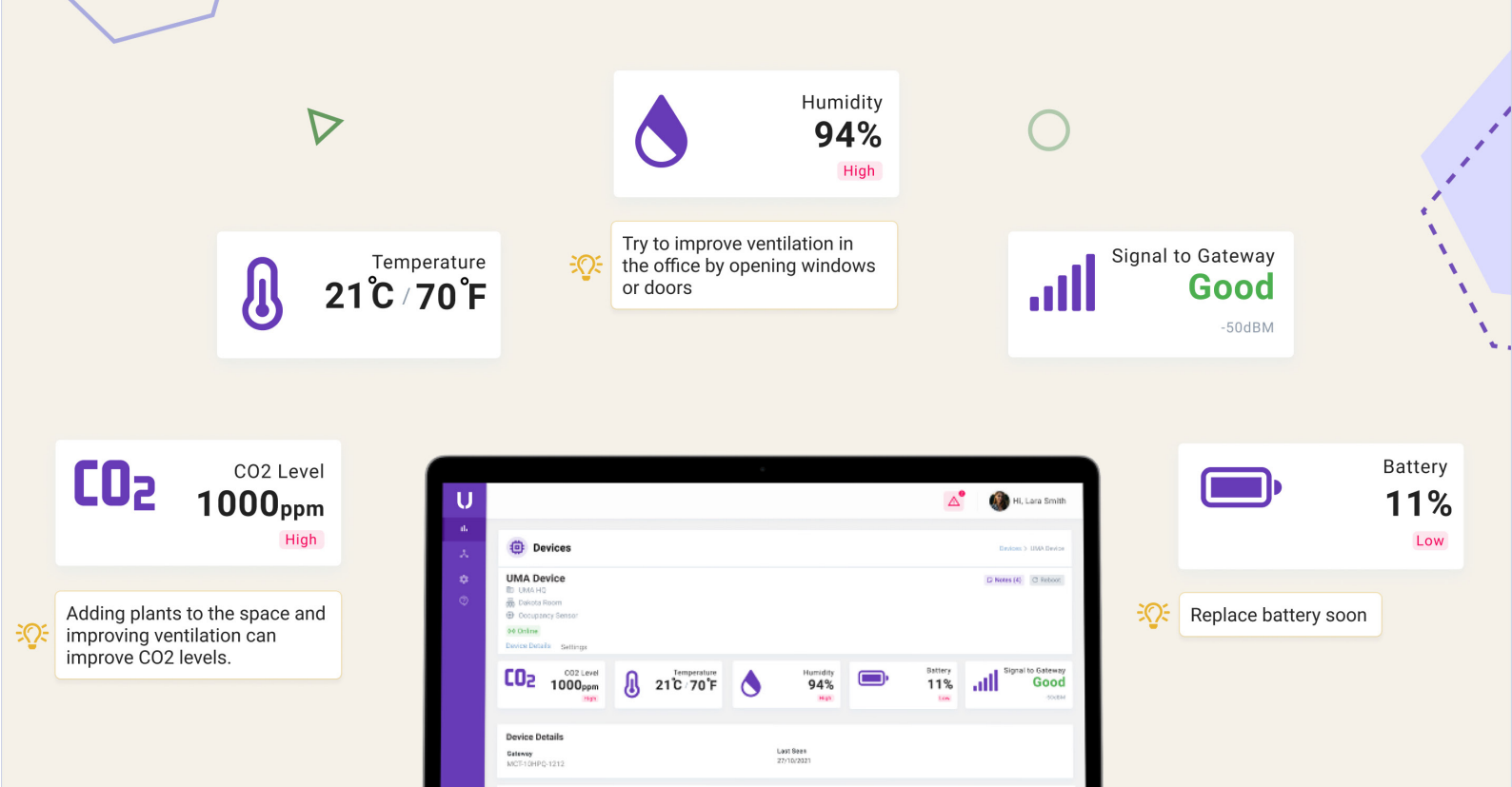
6

7

And remember, UMA Vision is not just about space utilisation. The bigger picture includes taking Indoor Air Quality and other environmental data (heat, humidity, CO₂) and cross referencing this data with occupancy data to improve air quality and better ensure that your employees are working in a healthy environment that allows them to be productive.

And if you feel your reporting needs a more dynamic thrust, UMA Vision's flexibility and interoperability extends to exporting data to Power BI and a range of third-party reporting tools for the creation of customised reports and dashboards.

However you generate your reports, askUMA's ultimate aim is for organisations to have the very best insights into how their workspaces are performing now, because only then can informed decisions be made to create ever more productive and connected workspaces that work hard for you. ▶



From Meeting Room Booking to Workplace Optimisation

Over 20 years ago, Steelcase’s Room Wizard™ was the first corporate solution to transform meeting room bookings. A small touchscreen placed beside the meeting room door showed reservations that had been made through Lotus Notes™, and enabled ad-hoc bookings of available rooms to be made. Shortly thereafter, integration with Microsoft Outlook™ followed.

The red or green lights gave you a visual confirmation of the room’s status — if you were physically within eyesight of the screens — and Room Wizard was undoubtedly the catalyst for a range of challenger brands where the screens became sexier, integration with Outlook improved, but where intended room usage was still the only game in town.

As these alternative platforms attempted to differentiate themselves, additional features became available, including managing meeting room resources, such as technology requirements and catering. With both internal and external meeting participants part of the meeting, visitor management was another popular feature.

But still these systems were mostly concerned with what was planned at the time of booking and could therefore only report on intended use, and not what

actually took place. For example, if 8 people were invited for the meeting, but only 4 were physically present, this change wouldn’t be known. The same was true for ad-hoc bookings made at the door of available rooms. There was no opportunity to record how many people were using the space.

How many times did we see just a small number of people using a meeting room with a much larger capacity? Or rooms that were equipped with expensive video conferencing, being used by people not using the technology?

askUMA’s Workspace Platform (UMA Vision) not only brings the management of meeting rooms to a new level in creating employee-centric workspaces, but the integration with IoT sensors to add the environmental conditions in workspaces opens up real opportunities to improve the employee experience and understand far more about energy and room usage.

Without this environmental data, how do you know if your buildings are living up to meet LEED and WELL building standards they were designed to achieve?

UMA has also changed the goalposts when it comes to using third-party displays and IoT sensors and using third-party software to create dashboards and spreadsheets of their highly valuable and insightful data. ■

POLAR

ABOUT POLAR

POLAR is the UK's premier distributor of Workplace Technology solutions.

Founded in 1969, POLAR offers a comprehensive range of products, services and support that help organisations increase productivity whilst reducing costs.

For room control, the new Muse platform from **AMX** will change how the integrated control of equipment, rooms and buildings is achieved through its multiple programming interfaces, including the no-code option, Node Red.

askUMA's Workplace Management Platform (UMA Vision) incorporates elements into a single solution that previously may have required two or more different platforms to achieve, integrating AV and smart building management with a set of tools to make your workspaces perform at their best.

AtlasIED have a range of audio solutions that provide privacy in open spaces, distribute different sources of audio to different spaces from a single controller and, should there be an emergency, provide mass communication, with lockdown or evacuation instructions that can be activated in many different ways.

TIV's ThinkHub is a visual collaboration solution that delivers the power of visual thinking with contextual information for a variety of in-room or hybrid settings. Multiple people, in multiple places, can work simultaneously with multiple pieces of visual content with an equity of participation, wherever they are located.

Based in Burgess Hill, West Sussex, POLAR exclusively represents AMX, AtlasIED, TIV and UMA, along with many additional audio, visual and workplace technology companies in the UK and Ireland, working directly with the approved specialist integrators who supply and support their customers with these solutions.

CONTACT

POLAR

Unit 3, Clayton Manor

Victoria Gardens

Burgess Hill

RH15 9NB

Tel: 01444 258 258

Email: sales@polar.uk.com

Web: www.polar.uk.com