



beyerdynamic

MMX 150 WIRELESS

GAMING HEADSET

User Manual | Bedienungsanleitung | Mode d'emploi
Instrucciones de uso | Manuale d'uso | Manual de instruções
Gebruiksaanwijzing | Brugsvejledning | Käyttöohje
Bruksanvisning | Bruksanvisning | Návod k obsluze | Kasutusjuhend
Kezelési útmutató | Naudojimo instrukcija | Lietošanas pamācība
Instrukcja obsługi | Instrucțiuni de utilizare | Návod na používanie
取扱説明書 | 使用说明书 | 操作説明

EN DE FR ES IT PT NL DA FI NO SV

CS ET HU LT LV PL RO SK JA ZH



CONTENTS

SAFETY INSTRUCTIONS	3
Intended use	3
Adjusting the volume	3
Reducing perception of ambient noise	3
General maintenance instructions	3
Risk of swallowing	3
Power and connecting cable	3
Using the battery	3
Environmental conditions	3
ABOUT THIS MANUAL	4
BOX CONTENTS	4
OPERATING ELEMENTS	4
CHARGING THE BATTERY	4
Remarks on the life of Li-ion batteries	4
DOWNLOAD BEYERDYNAMIC APP	4
COMPATIBILITY WITH PLAYBACK DEVICES	5
SUPPORTED AUDIO CODECS	5
OPERATION	5
Connect to a device via dongle or Bluetooth®	5
Dongle pairing mode	5
Bluetooth® pairing	5
Switching on/off	5
Connecting the microphone	5
Microphone on/off	6
Playing media	6
Adjusting the volume	6
Telephone	6
Sidetone on/off	6
Low Latency Mode	6
Bluetooth® Mode	6
Reset to factory settings	7
USE WITH CABLE	7
Connecting the USB cable	7
Connecting the audio cable	7
OVERVIEW LIGHT GUIDE DISPLAY	7
OVERVIEW MICROPHONE LED DISPLAY	7
OVERVIEW OF THE OPERATING FUNCTIONS	7
CLEANING	8
Changing ear pads	8
TROUBLESHOOTING	8
HELP WITH PROBLEMS / FAQ	9
PRODUCT REGISTRATION	9
DISPOSAL	9
Battery disposal	9
EU DECLARATION OF CONFORMITY	9
TECHNICAL SPECIFICATIONS	9
WARRANTY CONDITIONS	9
TRADEMARKS	9

Thank you for purchasing the MMX 150 wireless gaming headset from beyerdynamic. Please take some time to read this information carefully before using the MMX 150 wireless.

SAFETY INSTRUCTIONS

- ▶ Read these safety instructions carefully before using the MMX 150 wireless.
- ▶ Heed all instructions given, especially those regarding the safe use of the MMX 150 wireless.
- ▶ Do not use the MMX 150 wireless when it is damaged.

Intended use

- ▶ Only use the MMX 150 wireless as described in this manual.
- ▶ The company beyerdynamic GmbH & Co. KG accepts no liability for damage to the MMX 150 wireless or injury to persons caused by careless, improper or incorrect use of the MMX 150 wireless, or by use for purposes not specified by the manufacturer.
- ▶ The company beyerdynamic GmbH & Co. KG is not liable for damage to USB devices that do not comply with the USB specifications.
- ▶ The company beyerdynamic GmbH & Co. KG is not liable for damage resulting from connection interruptions due to batteries being empty or too old, or due to exceeding the Bluetooth® transmission range.
- ▶ Please also observe the relevant country-specific regulations before using the product.

Adjusting the volume



High volume levels over longer listening periods can permanently damage your hearing.

- ▶ Before using the MMX 150 wireless, set the volume to minimum.
- ▶ Only increase the volume after putting on the MMX 150 wireless.
- ▶ Do not use the MMX 150 wireless at high volume over a long period of time.
- ▶ When listening and speaking normally using MMX 150 wireless, your own voice should still be perceptible.
- ▶ In case of tinnitus, reduce the volume. If necessary, consult a doctor.
- ▶ We would like to point out that consistent high volume levels and longer listening periods can damage your hearing. Damage to hearing is irreversible. Always ensure an adequate volume level. It is advisable to keep listening periods as short as possible at high volume levels.

Reducing perception of ambient noise

The MMX 150 wireless headset drastically reduces the perception of ambient noise. Using the MMX 150 wireless in road traffic can be potentially dangerous. The user's hearing must not be impaired to the extent that it causes road safety risks.

- ▶ Do not use the MMX 150 wireless within the action area of potentially dangerous machines and tools.
- ▶ Avoid using the MMX 150 wireless in situations where hearing must not be impaired — particularly in road traffic, when crossing a level crossing or on a construction site.

General maintenance instructions

- ▶ Clean all parts of the MMX 150 wireless with a soft cloth moistened with water. Make sure that no liquid gets into the housing or the transducer.
- ▶ Do not use cleaning agents containing solvents, alcohol or acids, as these can damage the surface.

Risk of swallowing

- ▶ Keep small parts, such as product, packaging and accessories, away from children and pets. They constitute a choking hazard if swallowed!

Power and connecting cable

- ▶ Only use the cable supplied by us for both charging and connecting to a laptop.

Using the battery

Danger from heat, water and mechanical stress

Excessive heat, water and mechanical stress, may cause explosion, heat, fire, smoke or fumes. Injuries and irreversible damage to the battery may result.

- ▶ Do not expose the battery to excessive heat, fires or extremely low air pressure. There is a risk of explosion, fire, smoke or gas.
- ▶ Do not subject the battery to mechanical stress such as crushing. This may lead to an irreversible damage to the battery, explosion or injuries.
- ▶ Do not open the housing or remove the battery.
- ▶ Only use a USB 2.0/3.0 standard-compliant 5 V power adapter to charge the battery via the integrated USB type C socket.

Environmental conditions

- ▶ Do not expose the MMX 150 wireless to rain, snow, liquids or moisture.

ABOUT THIS MANUAL

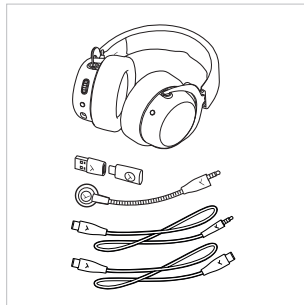
These instructions describe the most important functions of the product.

The information in these instructions refers to the standard settings of the software. A newer version may be available.

- ▶ Information on the software update can be found in the “beyerdynamic App” chapter.

BOX CONTENTS

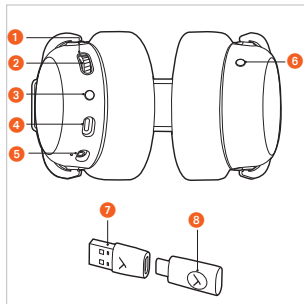
- ▶ MMX 150 wireless headset
- ▶ Detachable microphone
- ▶ MMX 150 wireless Low Latency Dongle with USB-A to USB-C adapter
- ▶ USB type C charging cable
- ▶ Audio cable USB type C to mini jack (3.5 mm)
- ▶ Quick start guide
- ▶ Compliance booklet



OPERATING ELEMENTS

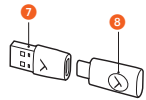
MMX 150 wireless headset

- 1 Light guide
- 2 Control wheel
- 3 Multifunction button (MFB)
- 4 USB type C port
- 5 Microphone connection, mini jack (3.5 mm)
- 6 On/off button



MMX 150 wireless Low Latency Dongle

- 7 USB adapter
- 8 Function button



CHARGING THE BATTERY

Before using the MMX 150 wireless for the first time, we recommend that you fully charge the battery in the headset. Please only use the USB cable supplied for charging.

- ▶ To do this, connect the USB cable to the USB-C port of the MMX 150 wireless and to the USB-A port of your device (e.g. power supply unit, computer etc.).
- ▶ During charging the light guide flashes red.
- ▶ When the light guide goes out, the battery is full.



Remarks on the life of Li-ion batteries

- ▶ When fully charged, disconnect the USB cable from the charger and the product.
- ▶ **CAUTION!** High temperatures, especially with a high charge level, can cause irreversible damage.
- ▶ If the battery is not used or is stored for extended periods of time, it is recommended to charge it to approx. 50% and store it at no more than 20 °C.
- ▶ Switch off the MMX 150 wireless after use.

DOWNLOAD BEYERDYNAMIC APP

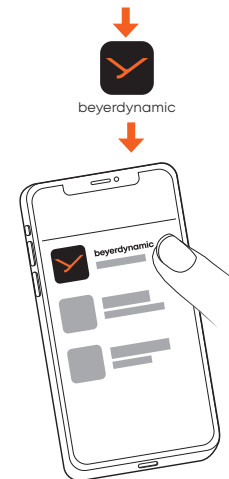
The beyerdynamic app gives you a customised control of your MMX 150 wireless.

Before using your MMX 150 wireless for the first time:

- ▶ Download the beyerdynamic app from the App Store (for iOS devices) or Google Play (for Android devices).



Search for beyerdynamic



- ▶ With the beyerdynamic app you can carry out customised operation settings and software updates.
- ▶ These settings are saved to your MMX 150 wireless, so you can enjoy them with any playback device connected to your MMX 150 wireless.

COMPATIBILITY WITH PLAYBACK DEVICES

MMX 150 wireless is compatible with Bluetooth® devices that support the following profiles:

- A2DP (for audio transmission)
- HFP/HSP (for phone operation and voice assistant)
- USB dongle
- USB cable to the headset
- Analogue cable

SUPPORTED AUDIO CODECS

Within the A2DP profile, MMX 150 wireless supports the audio codec SBC.

Only codecs that are available in the playback device can be used for audio transmission. The playback device and MMX 150 wireless automatically agree on the best available codec.

Most playback devices do not indicate which codec is actively in use.

OPERATION

Connect to a device via dongle or Bluetooth®

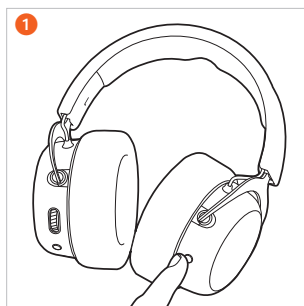
Before you can use the MMX 150 wireless, you must connect it to the supplied dongle **or** a Bluetooth®-enabled device. The connection procedure may differ between the various devices.

By default, the MMX 150 wireless is supplied in dongle pairing mode.

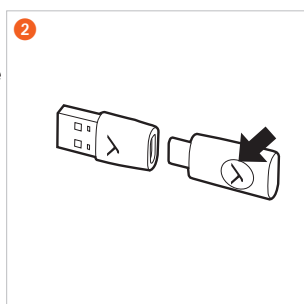
- ▶ Please refer to the operating instructions of the device to which you wish to connect the MMX 150 wireless.

Dongle pairing mode

- 1 Connect the dongle via USB-C or the USB-A adapter to a device (e.g. computer). When the MMX 150 wireless is **switched off**, press the on/off button for approx. 4 seconds (—) until the light guide flashes alternately blue and green.

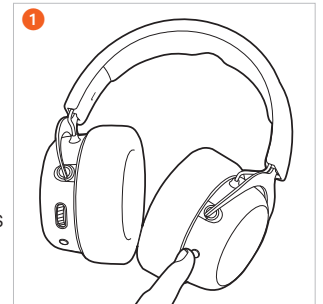


- 2 Press the function button on the dongle until the LED on the dongle will flash blue and green. As soon as a connection is established between the MMX 150 wireless headset and the dongle, the light guide on the MMX 150 wireless and the function button on the dongle will flash green.



Bluetooth® pairing

- 1 When the MMX 150 wireless is **switched on**, press the on/off button twice (●●) to change from the dongle pairing mode to the Bluetooth® pairing mode. When the MMX 150 wireless is **switched off**, press the on/off button approx. 4 seconds (—) until the light guide alternately flashes blue and red.



- 2 Select “MMX 150 wireless” from the pairing list of the playback device. As soon as a Bluetooth® connection is established, the light guide flashes blue.



Switching on/off

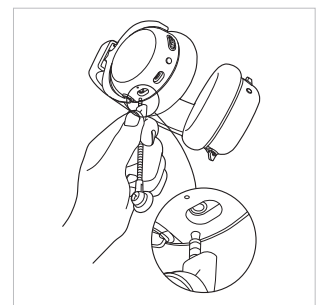
- ▶ **Switching on**
Press and hold the on/off button of the **switched-off** MMX 150 wireless for approx. 2 seconds (—). The light guide lights up red for 2 seconds and then goes out.
- ▶ **Switching off**
Press and hold the on/off button of the **switched-on** MMX 150 wireless for approx. 2 seconds (—). The light guide lights up red for 2 seconds and then goes out.



If you are using the MMX 150 wireless with a cable, you must also switch it on.

Connecting the microphone

- ▶ Connect the microphone to the jack socket. Be aware of the position of the jack plug.



Microphone on/off

▶ Mute

When the microphone is currently in use, press the control wheel once (●) to mute the microphone. The light guide and the LED on the microphone will illuminate red.

▶ Unmute

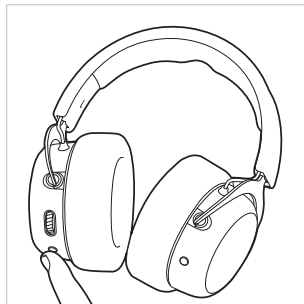
Press the control wheel once (●) to unmute the microphone.



The mute function is only available when a connected device is accessing the microphone.

Playing media

- ▶ Press the multifunction button once (●) to start or stop playback.
- ▶ Press the multifunction button twice (●●) to play the next track.
- ▶ Press the multifunction button three times (●●●) to play the previous track.



Adjusting the volume

- ▶ Turn the control wheel **upwards** to **increase** the volume.
- ▶ Turn the control wheel **downwards** to **reduce** the volume.



Telephone

- ▶ **Accepting a call**
Press the on/off button once (●).
- ▶ **Ending a call**
Press the on/off button once (●).
- ▶ **Rejecting a call**
Press the on/off button twice (●●).
- ▶ **Cancel an outgoing call**
Press the on/off button once (●).



Sidetone on/off

▶ Switching on

Press and hold the control wheel for approx. 2 seconds (■).

▶ Switching off

Press and hold the control wheel for approx. 2 seconds (■).



Sidetone does not work when using the audio cable or when the microphone is removed.

Low Latency Mode

- ▶ By default, the MMX 150 wireless is supplied in **low latency mode**. This mode is suitable for gaming devices with a USB port only.
- ▶ Connect the MMX 150 wireless Low Latency Dongle to the USB port of the device.
- ▶ You can switch between low latency mode and Bluetooth® mode by pressing the multifunction button for two seconds (■).




Bluetooth® Mode

Before you can use the headset in **Bluetooth® mode**, it must be connected to a mobile phone or other Bluetooth®-enabled device. The connection procedure may vary between different devices.

- ▶ Please refer to the user manual of the device to which the MMX 150 wireless is to be connected.
- ▶ If the headset is in **low latency mode**:
Briefly press the on/off button twice (●●) to switch to **Bluetooth® pairing mode**.
- ▶ After Bluetooth® pairing, select **MMX 150 wireless** from the pairing list on your mobile phone or another Bluetooth®-enabled device.
- ▶ Once the headset is connected, audio and phone functions are available. Refer also to the table "Overview of the operating functions".



Reset to factory settings

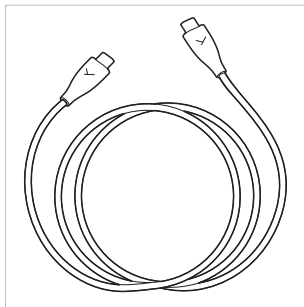
- ▶ Press and hold the on/off button for approx. 9 seconds ().



USE WITH CABLE

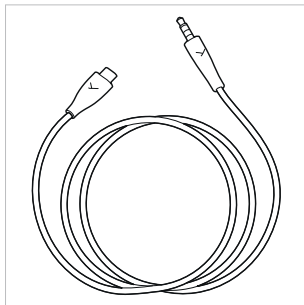
Connecting the USB cable

- ▶ Connect the USB-C to USB-C cable to the headset and the other end (USB-C) to a device (e.g. computer/console).
- ▶ For devices with USB-A connector, use the USB-C to USB-A adapter.
- ▶ Once the headset is connected, the driver will install automatically. This may take a few seconds.
- ▶ Please check your system's audio settings and select MMX 150 wireless as the input and output device if it is not already selected.
- ▶ If you would like to use the headset as a USB audio device, turn it off and connect it via USB. The headset will start automatically and will be ready as a USB device.
- ▶ If you would like to charge the headset during wireless operation, connect it to the PC. This will not affect the wireless connection, but the headset will not be available as a USB audio device.



Connecting the audio cable

- ▶ Connect the USB plug to the headset and the jack plug to the device.
- ▶ Please also switch on the headset when using the audio cable.
- ▶ When connecting to a computer, please check the system audio settings and select the computer's sound card as the input and output device.
- ▶ **Caution: Only connect the jack plug of the headphone cable to a headphone jack!** If you connect the headset to other jack connections, it may be damaged.



OVERVIEW LIGHT GUIDE DISPLAY


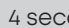

Function	Light guide display
Switching on	Illuminates red for 2 seconds
Switching off	Illuminates red for 2 seconds
Dongle pairing mode	Flashes alternately green and blue
Bluetooth® pairing mode	Flashes alternately red and blue
Bluetooth® connection active	Slowly flashing blue
Bluetooth® connection lost	Slowly flashing red
Mode connection lost	Rapidly flashing white
Restore factory settings	Flashes yellow three times
Connected with dongle	Slowly flashing green
Battery almost empty	Rapidly flashes red three times
Charging	Flashing red

OVERVIEW MICROPHONE LED DISPLAY

Function	Microphone display
Microphone muted	LED illuminates red

OVERVIEW OF THE OPERATING FUNCTIONS

If not stated otherwise, the functions listed apply to a **switched-on** headset.

Function	Operation on headset
Switching on	▶ Press and hold the on/off button for approx. 2 seconds ().
Switching off	▶ Press and hold the on/off button for approx. 4 seconds ().
Dongle pairing mode	▶ With the headset turned off , press and hold the on/off button for approx. 4 seconds ().
Bluetooth® pairing mode	▶ Briefly press the on/off button twice (● ●) to switch from the dongle pairing mode to the Bluetooth® pairing mode and vice versa.

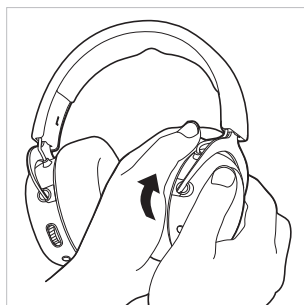
- Restore factory settings ▶ Press and hold the on/off button for approx. 9 seconds (■).
- Start / pause ▶ Press the multifunction button once (●).
- Increase volume ▶ Turn the control wheel upwards.
- Reduce volume ▶ Turn the control wheel downwards.
- Next track ▶ Press the multifunction button twice (●●).
- Previous track ▶ Press the multifunction button three times (●●●).
- Accept/end call ▶ Press the on/off button once (●).
- Reject call ▶ Press and hold the on/off button for approx. 2 seconds (■).
- Cancel outgoing call ▶ Press and hold the on/off button for approx. 2 seconds (■).
- Sidetone on/off ▶ Press and hold the control wheel for approx. 2 seconds (■).

CLEANING

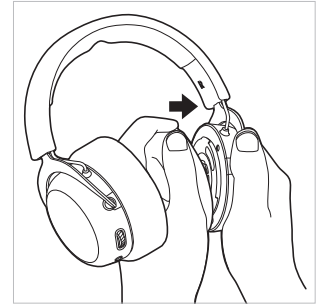
- ▶ For reasons of hygiene, you should occasionally clean the ear and headband pads with a soft cloth moistened with water. Make sure that **no water** gets into the ear cups or transducers.
- ▶ Do **not** use cleaning agents containing solvents, alcohol or acids.
- ▶ **Never** use a **vacuum cleaner** for cleaning the headphone, as this may cause irreparable damage.
- ▶ As ear pads are subject to natural wear and tear, it will be necessary to replace them from time to time. You can easily do this yourself.
- ▶ If other components have to be replaced, please contact your local beyerdynamic representative.

Changing ear pads

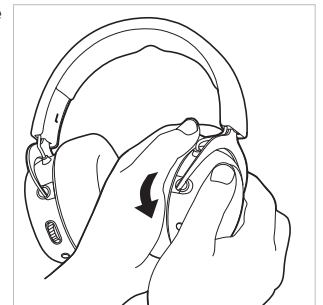
- ▶ Turn the ear pad counter-clockwise and remove it.



- ▶ Place the new ear pad onto the housing.



- ▶ Turn the ear pad clockwise until it is attached or until you hear that the ear pad has clicked into place.



TROUBLESHOOTING

Problem	Cause	Solution
MMX 150 wireless cannot be switched on	▶ Battery is empty or almost empty.	▶ Charge the battery.
No audio output	▶ No Bluetooth® connection	▶ Pair MMX 150 wireless with the playback device.
MMX 150 wireless does not appear among the available Bluetooth® devices on the playback device	<ul style="list-style-type: none"> ▶ MMX 150 wireless is turned off. ▶ MMX 150 wireless is not in the pairing mode. ▶ There exists a Bluetooth® connection to another playback device already. 	<ul style="list-style-type: none"> ▶ Turn on MMX 150 wireless. Put MMX 150 wireless into the pairing mode. ▶ Disconnect the Bluetooth® connection to the other playback device and connect MMX 150 wireless to the desired device.
Playback volume is too low, despite the volume of MMX 150 wireless is set to maximum	▶ The received audio signal is too low.	▶ Increase the playback volume on the playback device to maximum.
The wireless range is too low or the connection is disrupted	▶ There are interferences with other devices.	<ul style="list-style-type: none"> ▶ Move away from WLAN routers and microwave ovens. ▶ Make sure that your body is not between the playback device and MMX 150 wireless. ▶ Use a different codec on the playback device.

HELP WITH PROBLEMS / FAQ

Answers to more most common problems and questions can be found on the internet at:

<https://www.beyerdynamic.com/faq>

PRODUCT REGISTRATION

Using the serial number, you can register your MMX 150 wireless on the internet at:

<https://www.beyerdynamic.com/service>

DISPOSAL

- ▶ This symbol on the product, in the operating instructions or on the packaging means that electrical and electronic devices must be disposed of separately from household waste at the end of their life cycle.
- ▶ Always dispose of used equipment in accordance with applicable regulations.



For sale within the EU only:

- ▶ For the return of old equipment, there are free collection points or a free return to beyerdynamic, as well as other acceptance points for reuse. The addresses are available at the local city or municipal administration.
- ▶ Dealers for electronic equipment are generally obliged to take back waste electrical/electronic equipment free of charge. This obligation also applies to sales via remote communication.
- ▶ For further information, please contact the local authorities or the dealer from whom the product was purchased

Battery disposal

- ▶ Dispose of batteries separately from the product after use in accordance with the applicable regulations. They must not be disposed of with household waste. Returning batteries is free of charge.
- ▶ Discharge the batteries before disposal.

Non-destructive removal of the battery by the end user is not possible with this product. Please contact beyerdynamic or consult independent specialists.

EU DECLARATION OF CONFORMITY

The company beyerdynamic GmbH & Co. KG hereby declares that this radio transmission device complies with the EU Directive 2014/53/EU and the EU Directive 2011/65/EU.

- ▶ You will find the full text of the EU declaration of conformity on the internet at:

<https://www.beyerdynamic.com/cod>

TECHNICAL SPECIFICATIONS

MMX 150 wireless headset

Bluetooth® frequency range	2,400 – 2,483.5 MHz
Transmitting power	≤ 10 dBm
Charging temperature range	0 to +45 °C
Operating temperature range	-10 to +50 °C
Battery type: Lithium-ion rechargeable battery	3.7 Vdc, 850 mAh

MMX 150 wireless low latency dongle

Bluetooth® frequency range	2,400 – 2,483.5 MHz
Transmitting power	≤ 10 dBm
Operating temperature range	-10 to +50 °C

- ▶ More detailed information on the technical specifications can be found on the internet at: <https://www.beyerdynamic.com>

WARRANTY CONDITIONS

The company beyerdynamic GmbH & Co. KG provides a limited warranty for the original beyerdynamic product you have purchased.

- ▶ You can find detailed information about beyerdynamic's warranty conditions on the internet at: <https://www.beyerdynamic.com/service/warranty>

TRADEMARKS

The Bluetooth® word mark and logos are registered trademarks of the Bluetooth® SIG, Inc. and any use of such marks by beyerdynamic is under license. Other trademarks and trade names are the property of the respective owners.

USB Type-A, USB Type-B and USB Type-C are trademarks of USB Implementers.

beyerdynamic GmbH & Co. KG
Theresienstraße 8 · 74072 Heilbronn / Germany
Phone +49 7131 617-300 · E-Mail info@beyerdynamic.com
www.beyerdynamic.com

For further distributors worldwide, please go to www.beyerdynamic.com
Non-contractual illustrations. Subject to change without notice.

Weitere Vertriebspartner weltweit finden Sie im Internet unter www.beyerdynamic.com
Abbildungen nicht vertragsbindend. Änderungen vorbehalten.