



## DATASHEET

# PAN SUBWOOFER P SW-108 | RJ



The **Pan Subwoofer P SW-108 | RJ** is a powerful design subwoofer. Thanks to its integrated RJ45 socket\*\*, this loudspeaker can be very easily used in buildings with structured cabling. The **P SW-108 | RJ** is equipped with one 8" low-frequency drivers.

The **P SW-108 | RJ** features an attractive design as well as a pure, precise and deep bass reproduction.

The enclosure is made of aluminium and can be custom-finished in any colour. The chassis are protected from external impact by a perforated metal sheet that is integrated into the design.

At the back of the **P SW-108 | RJ** there is an RJ45 socket with special wiring for the low-impedance audio signal connection. The optional mounting accessories (wall and ceiling mounts) can be installed by inserting a slot nut in the lateral slots and the rear slot.

A powerful DSP power amplifier is required to operate the **P SW-108 | RJ**.

Illustration in colour option, see properties for details.

## EQUIPMENT / OPTIONS



See last page for explanation of the symbols.

## APPLICATIONS

Churches, museums, conference rooms, lecture halls, surround, A/V presentation rooms, immersive sound

## FEATURES

Pure and deep bass reproduction, slim and unobtrusive design.

## ACCESSORIES

For the **Pan Subwoofer** series, there is a wide range of accessories for fixed installation and mobile use.

All **Pan Subwoofer** loudspeakers are designed, developed and manufactured in Germany by Pan Acoustics from high quality materials and according to strict criteria.



## TECHNICAL DATA P SW-108 | RJ (PASSIVE)

### ACOUSTIC PROPERTIES

<b>Configuration:</b>	Direct radiating subwoofer
<b>Lower cut-off frequency:</b>	30 Hz
<b>Equipment:</b>	1 x 8" HQ
<b>Rated power:</b>	1000 W (peak) / 500 W (programme) / 250 W (AES)
<b>Recommended amplifier:</b>	DSP power amplifier
<b>Sensitivity:</b>	85 dB 1 W / 1 m
<b>Maximum SPL:</b>	109 dB* (peak) @ 1 m
<b>Impedance:</b>	4 ohms
<b>Connections:</b>	1 x RJ45**
<b>Operating temperature:</b>	-10 °C to +50 °C (ambient temperature)

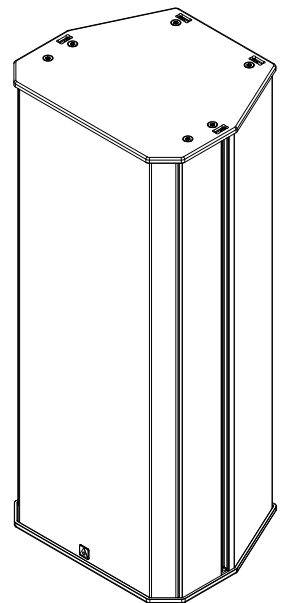
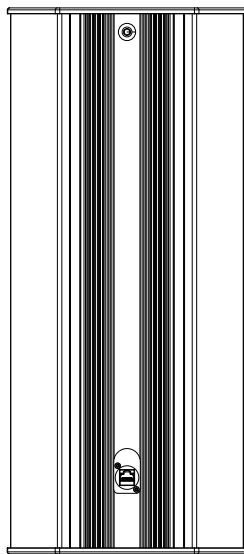
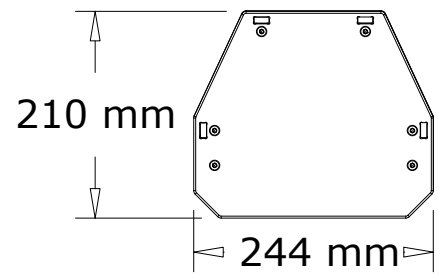
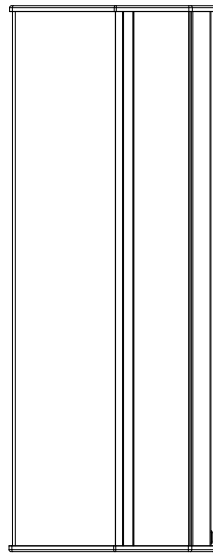
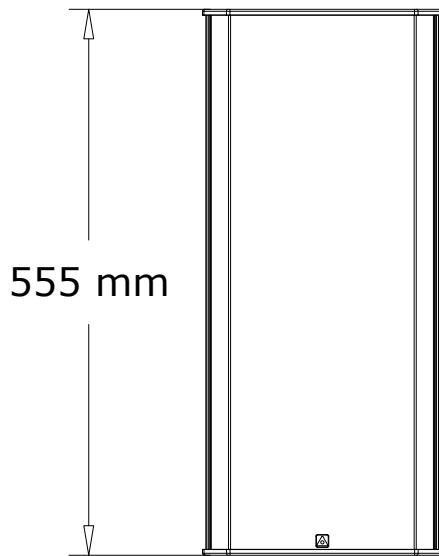
### MECHANICAL PROPERTIES

<b>Enclosure:</b>	Aluminium profile
<b>Grille:</b>	Powder-coated perforated metal sheet
<b>Standard colours (with silver lids): (optional: lid in enclosure colour)</b>	RAL 9005 (black), silk matt RAL 9010 (white), silk matt
<b>Dimensions without bracket (HxWxD):</b>	555 x 224 x 210 [mm]
<b>Weight:</b>	9 kg
<b>Mounting option:</b>	Extensive range of mounting accessories available

\*Under anechoic half-space conditions with DSP settings.  
Frequency range: -10 dB under anechoic half-space conditions.

\*\*Large cable lengths and small wire cross-sections can greatly reduce the max. power.

TECHNICAL DRAWING P SW-108 | RJ (PASSIVE)



## EQUIPMENT / OPTIONS AT A GLANCE – PAN SUBWOOFER SERIES



**Customised painting/colouring**  
within the RAL colour range. Other colour systems such as RAL design, Pantone, etc. are available on request.



**Analogue audio inputs**  
with balanced signal routing.



**Digital Dante audio network**  
including AES67 support.  
Redundant network structure with Pan Net control.



**Pilot tone evaluation** for integration in SAA/ENS systems.



**General Purpose Output (GPO)**  
Switchable contact, e.g. for status request via downstream media control.



**Digital audio inputs** support  
2 x AES/EBU (AES3).



**Pan Net**  
Pan Acoustics' own control and monitoring protocol.



**Priority switching**  
Automatic switching of the audio inputs, e.g. between programme and announcement.



**Accessories** such as wall, tripod and ceiling mounts, different interfaces, connection cables, weather protection hoods and connection sets are available.



**Looks good, sounds good.**  
Pan Acoustics' products are defined by natural sound and attractive design.

Some equipment features cannot be combined. For information about which features can be combined with each other, please send an e-mail to [sales@pan-acoustics.de](mailto:sales@pan-acoustics.de).

## Our quality promise

**Pan Acoustics** stands by its products and gives up to **10 years warranty** on its loudspeakers for any material or manufacturing defects. New products manufactured in accordance with protection classes IP54 and IP65 as well as digital audio interfaces (Dante®) from Audinate Pty Ltd and rechargeable batteries are excluded from the 10-year warranty. A warranty period of 3 years is granted for loudspeakers in accordance with protection classes IP54 and IP65.

